

User Instructions

Titan



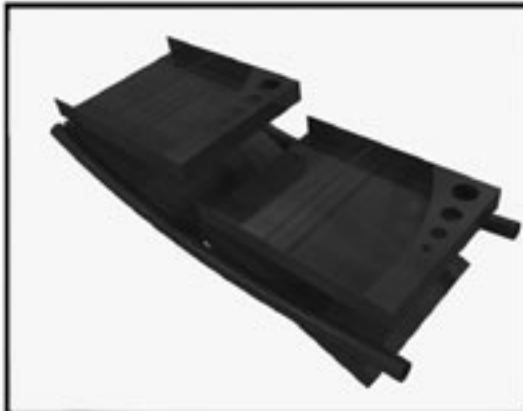
Remove the system from the box.



Find the bottom section of the rack. The bottom section has extended poles for mounting the top to it.



Place the bottom section onto the foot, making sure that it snaps into place.



Find the top section of the rack. The top section has plastic caps on the top of the poles.



Place the top section onto the bottom section, making sure that it snaps into place.



if done correctly there should be a faint "S" shape to the system.

Product Details

Color: black or silver
Weight of Base: 3.75 lbs
Profile of Base: 15"D x 12.5"W x 3.5"T
Height of Display: 53"
Pocket Size: 1"D x 9"W x 12"T
Shipping Size: 14" x 13" x 30"
Shipping Weight: 28 lbs



Reverse the procedure to disassemble.

Your system is now ready to be used.